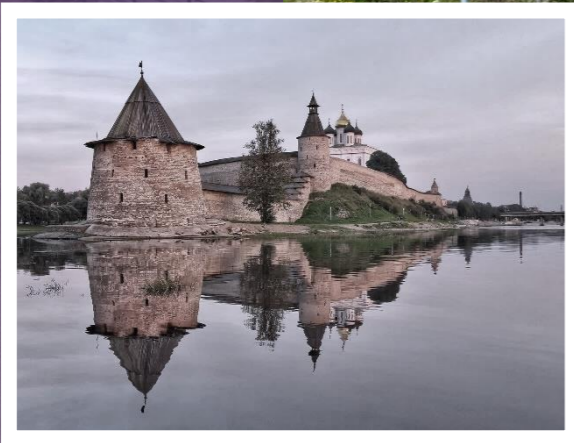




Особая  
экономическая  
зона  
**МОГЛИНО**

2024  
PSKOV REGION



[www.moglino.ru](http://www.moglino.ru)



**МОГЛИНО**

SPECIAL ECONOMIC ZONE



# MOGLINO

## FREE DEVELOPMENT ZONE

[www.moglino.ru](http://www.moglino.ru)



# 2012

YEAR OF SEZ  
ESTABLISHMENT

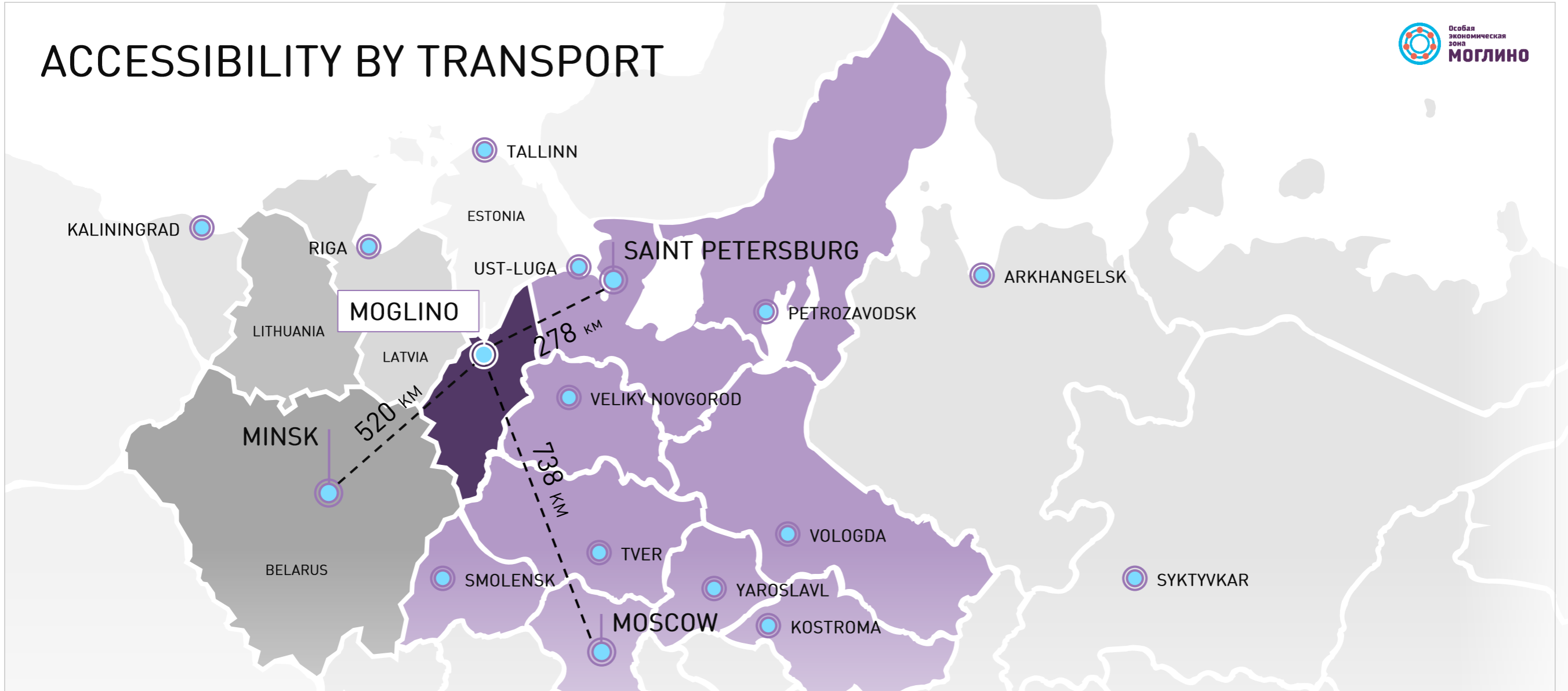
Modern international-level production and business infrastructure disburdening residents from routine tasks, allowing to be fully immersed in the development of the enterprise

- STATE SEZ ESTABLISHED UNDER FEDERAL LAW 116-FZ ON SPECIAL ECONOMIC ZONES IN THE RUSSIAN FEDERATION OF 22.07.2005.
- PREFERENTIAL TAXATION
- CUSTOMS PREFERENCES

MOGLINO



# ACCESSIBILITY BY TRANSPORT



HIGH DENSITY OF INTERNATIONAL RAILROADS  
AND HIGHWAYS

PROXIMITY TO SEAPORTS

AIRPORT WITH REGULAR FLIGHTS TO  
MOSCOW, KALININGRAD, SOCHI,  
MINERALNYE VODY



**300** HA IS THE TOTAL AREA OF  
MOGLINO SEZ

**100** % READINESS OF  
INFRASTRUCTURE

**5000** m<sup>2</sup> AREA OF A TYPICAL PANT IN  
SEZ

A promising region with developed logistics infrastructure and resource potential ready to launch large-scale projects with comprehensive continuous administration

[www.moglino.ru](http://www.moglino.ru)

PLACE FOR YOUR BUSINESS



# CURRENT INFRASTRUCTURE AND DEVELOPMENT PROSPECTS



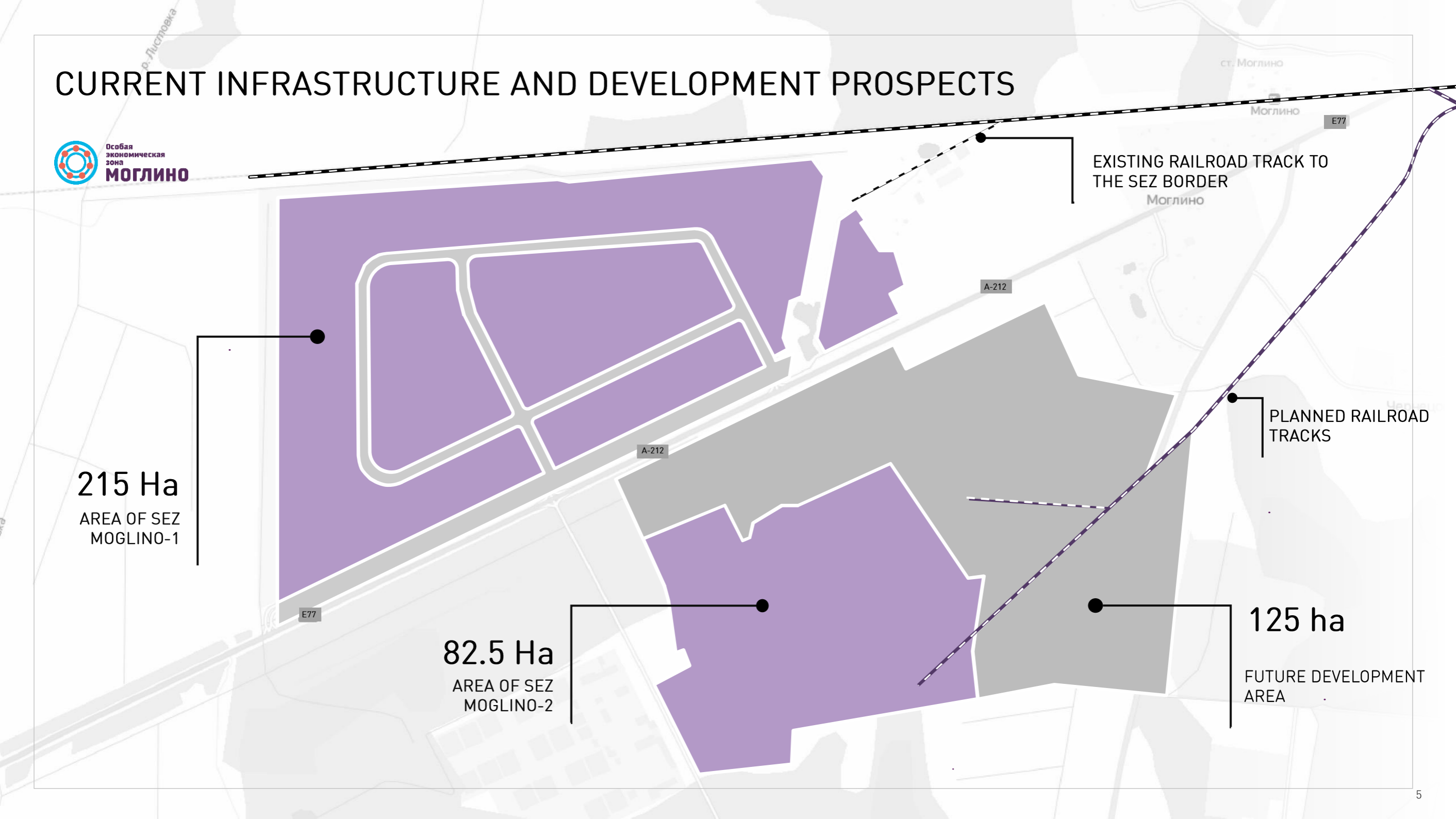
**215 Ha**  
AREA OF SEZ  
MOGLINO-1

**82.5 Ha**  
AREA OF SEZ  
MOGLINO-2

**125 ha**  
FUTURE DEVELOPMENT  
AREA

EXISTING RAILROAD TRACK TO  
THE SEZ BORDER

PLANNED RAILROAD  
TRACKS







## UTILITY INFRASTRUCTURE

Complex of utility and communication systems with regular service maintenance



### WATER SUPPLY

**4900** m<sup>3</sup>/day

process water: 3.3 rub./m<sup>3</sup>,  
Potable water: 5.2 rub./m<sup>3</sup>

**1200** m<sup>3</sup>/day (projected)

### GAS SUPPLY

**210** mln. normal m<sup>3</sup>/year

7154 rub. /thous.m<sup>3</sup>

### DRAINAGE

**3500** m<sup>3</sup>/day

39.7 rub./m<sup>3</sup>

### ELECTRIC POWER SUPPLY

**66** MW

Average rate: 6.7 rub per kW/h

**49.9** MW (projected)

4.6 rub. per kW/h

### INDUSTRIAL SEWAGE TREATMENT FACILITIES

**500** m<sup>3</sup>/day (projected)



# LAND PLOTS LEASE AND PURCHASE

from  
**6700**  
 RUB./HA/YEAR  
 LAND PLOT LEASE

FROM  
**134,000**  
 RUB./HA  
 LAND PLOT PURCHASE

MOGLINO

## RULES FOR CALCULATING LAND PLOT VALUE

LEASE

2% of cadastral value  
 with downward adjustment

LEASE DOWNWARD  
 ADJUSTMENT



PURCHASE

20% of cadastral value

\*The value is indicated based on average figures. Accurate calculation is made in respect of the specific land plot





# TAX INCENTIVES FOR RESIDENTS

## INCOME TAX

REGIONAL BUDGET

0%

THE FIRST FIVE YEARS

5%

THE NEXT FIVE YEARS

13.5%

UNTIL 2061

FEDERAL BUDGET

2%

UNTIL 2061

## PROPERTY TAX

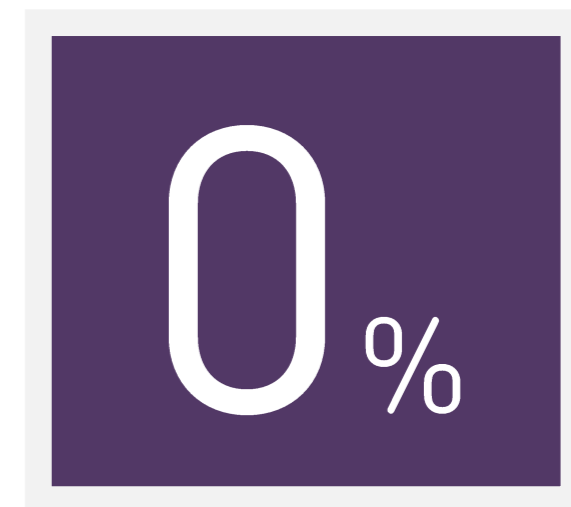
FOR 10 YEARS

## TRANSPORT TAX

FOR 10 YEARS

## LAND TAX

FOR 5 YEARS



DEPRECIATION RATE COEFFICIENT: 2



# FREE CUSTOMS ZONE

IMPORTATION FROM OUTSIDE THE  
CUSTOMS UNION (EAEU)



**MOGLINO**  
Special  
Economic  
Zone



0%

VAT  
CUSTOMS DUTIES

UP TO 30%

GUARANTEED SAVING ON INVESTMENTS AND THE POSSIBILITY TO SIGNIFICANTLY  
SHORTEN THE START-UP TIME FOR THE PROJECT



## HOW TO BECOME A RESIDENT OF MOGLINO SEZ

Step  
**1**

**REVIEW BOARD**

Prepare a business plan  
and register the legal  
entity in Pskovsky district  
of the Pskov region



Step  
**2**

**ADVISORY BOARD**





## CAPITAL INVESTMENTS IN THE PROJECT

0  
rub.

technology and innovation project

40  
mln. rub.

when the project is implemented using ready-made production facilities

120  
mln. rub.

industrial production and logistics activities

50  
mln. rub.

a project that is consistent with the priority areas of state policy of the Russian Federation

\*When the Inter-Ministerial Board finds that the project complies with the requirements for technological sovereignty and Russian economy's structural adjustment projects, as defined by the priority areas. The requirements are specified in Resolution of the Government No 603 of April 15, 2023.

Requirements for investment projects implemented by residents of special economic zones are approved by Resolution of the Government of the Russian Federation No 156 of February 14, 2024.



# SERVICES OF THE MANAGEMENT COMPANY OF MOGLINO SEZ

SEZ management company renders a wide range of services to its residents



## PROJECT SUPPORT

Assistance in preparing a business plan, obtaining loans from the local FER, legal support

## TECHNOLOGICAL SUPPORT

Free connection to utility infrastructure facilities. Technical specifications are issued in 1 hour

## CONSTRUCTION SUPPORT

Construction services from the design stage to commissioning

## OPERATING SERVICES

Own service company, providing infrastructure maintenance services

## LEASE

Lease of office and industrial premises, lease of special equipment





# MOGLINO RESIDENTS

37.8 BLN. ₺  
SCHEDULED INVESTMENT VOLUME

1692  
NUMBER OF SCHEDULED JOBS



**NOR MAALI**

Nor-Maali, LLC  
Production of paint materials



Ice Steam Rus, PJSC  
Production of ingredients by freeze-drying method

**SYNTECHNO**  
СИНТЕЗ ТЕХНОЛОГИИ

Syntez Technology, LLC  
Production of carbon monocrystals

**Титан-Полимер**®

Titan-Polymer Plant, LLC (Pskov)  
Production of PETF pellets and BOPET films

**FINECO**  
GOLDSTREET

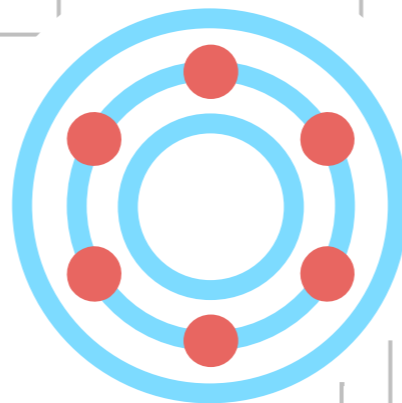
FINECO Goldstreet, LLC  
Production of equipment for processing of biological waste of animal origin

**ELME MESSER GMS**  
Gases for Life

Elme Messer Rus, LLC  
Production of industrial liquefied gases: nitrogen, argon, oxygen



Isma Tech, LLC  
Production (processing) of spices and kitchen herbs



Pskovinbalk, LLC  
Production of medicines



Eurobit, LLC  
Production of modified bitumen



BetaMed, LLC  
Production of medical products



Lesprom, LLC  
Production of wide format plywood



Garmoniya, LLC  
Production of disposable wooden tableware



Trans-Alfa West, LLC  
Production of electric buses



North-West Oil Extraction Plant, LLC  
Establishment of North-West oil (rapeseed) extraction plant



Skrining-M, LLC  
Production of medical diagnostic tests





Titan-Polymer



## TITAN-POLYMER, LLC

Production of polyethyleneterephthalate (PETF), biaxially oriented polyethylene terephthalate (BOPET) film

17 BLN. ₺

INVESTMENTS ALREADY MADE

395

JOBS ALREADY CREATED





## ELME MESSER RUS, LLC

Production of industrial gases: nitrogen, argon, oxygen

2.5 BLN ₺

INVESTMENTS ALREADY MADE

27

JOB'S ALREADY CREATED





**SYBTEZ TECHNOLOGY, LLC**

Production of carbon monocrystals

**285** MLN. ₺

INVESTMENTS ALREADY MADE

**24**

JOBS ALREADY CREATED



NORMAALI

NOR-MAALI, LLC

Production of paint materials

550 MLN. ₺  
INVESTMENTS ALREADY MADE

36  
JOBS ALREADY CREATED





ice steam  
technology



ICE STEAM RUS, PJSC

Production of food ingredients by freeze-drying method

481 MLN. ₺

INVESTMENTS ALREADY MADE

35

JOB'S ALREADY CREATED





EUROBIT, LLC

Production of polymer-bitumen binders (PBB)

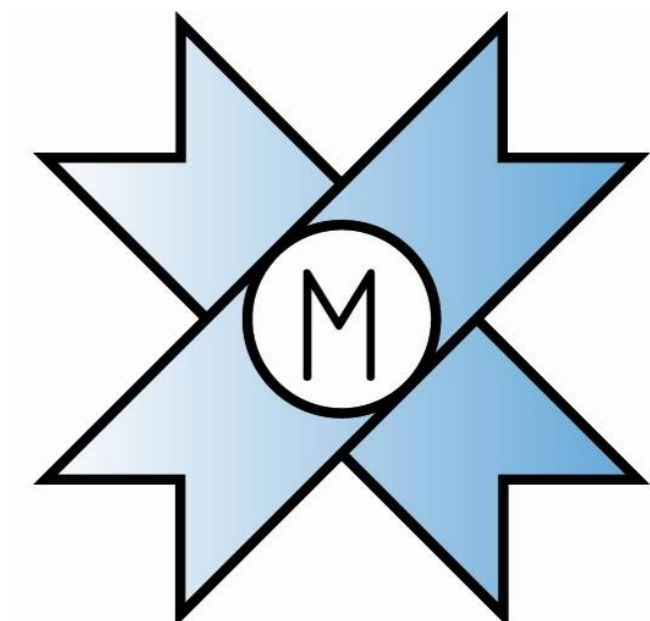
88 MLN. ₺

INVESTMENTS ALREADY MADE

7

JOB'S ALREADY CREATED





**SKRINING-M, LLC**  
Production of medical test kits

**70** MLN. ₺  
INVESTMENTS ALREADY MADE

**57**  
JOBS ALREADY CREATED



## PERSONNEL POTENTIAL OF THE REGION



7

HIGHER EDUCATION  
INSTITUTIONS

15

COLLEGES AND  
VOCATIONAL SCHOOLS

### PERSONNEL TRAINING TO MEET THE NEEDS OF INVESTORS

Cooperation agreement with the  
core higher education institution of  
the region

### PERSONNEL RECRUITING

In-house recruitment and hiring  
department

### PERSONNEL TRAINING

Assistance in employees training  
and professional retraining



# PROSPECTS OF INFRASTRUCTURE DEVELOPMENT

- INDUSTRIAL PREMISES TO ACCOMMODATE RESIDENTS



- FINISHED DESIGN DOCUMENTATION
- AREA: 20,000 M2
- INDUSTRIAL AND OFFICE PREMISES
- CAN ACCOMMODATE ANY KIND OF PRODUCTION

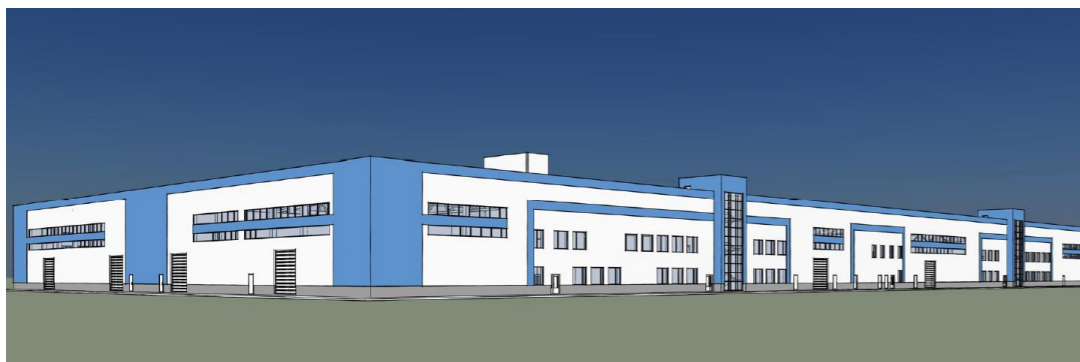
- FINISHED DESIGN DOCUMENTATION
- OFFICE PREMISES
- CONFERENCE HALLS
- HOTEL
- CAN ACCOMMODATE A RESTAURANT, POST OFFICE, BANK, MEDICAL STATION, PRIVATE KINDERGARTEN ETC.

- ADMINISTRATIVE OFFICE CENTER



- PRODUCTION BUILDING AT MOGLINO- 2 SITE

- AREA: 15,000 M2
- RESIDENTS CAN USE BOPET FILMS AND PET PELLETS AS RAW MATERIAL FOR THEIR PRODUCTION







# COMFORTABLE ENVIRONMENT FOR LIFE IN THE PSKOV REGION



Pushkinskiye Gory



Izborsk Fortress



Pskov Pechersky Monastery

8 KM

FROM MOGLINO SEZ TO PSKOV WHICH IS A HISTORIC AND CULTURAL CENTER



- WELL-DEVELOPED HOUSING STOCK
- SCHOOLS AND KIDERGARTENS
- HIGHER EDUCATION INSTITUTIONS
- SPORTS INFRASTRUCTURE
- RECREATIONAL FACILITIES
- HEALTHCARE INSTITUTIONS

581,147

PEOPLE – POPULATION OF THE PSKOV REGION





WELCOME TO MOGLINO SEZ!

+7 8112 29 33 33  
info@moglinosez.ru

Moglino SEZ Industrial Area, 18 Moglino village,  
Pskovsky district, Pskov region, 180502,

[www.moglino.ru](http://www.moglino.ru)

[vk.com/moglino\\_sez](https://vk.com/moglino_sez)  
[t.me/sezmoglino](https://t.me/sezmoglino)

